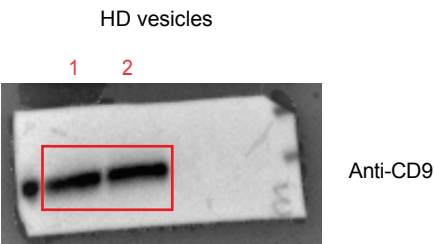
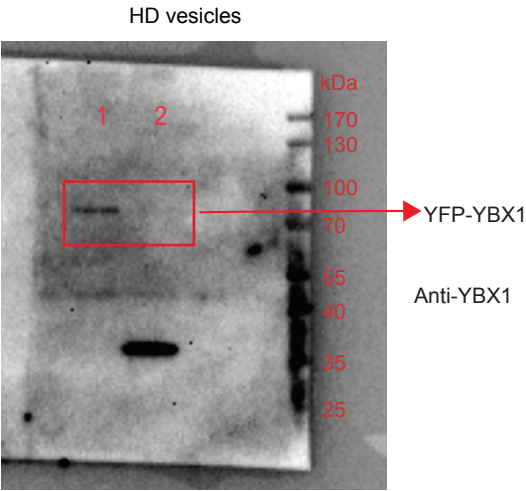
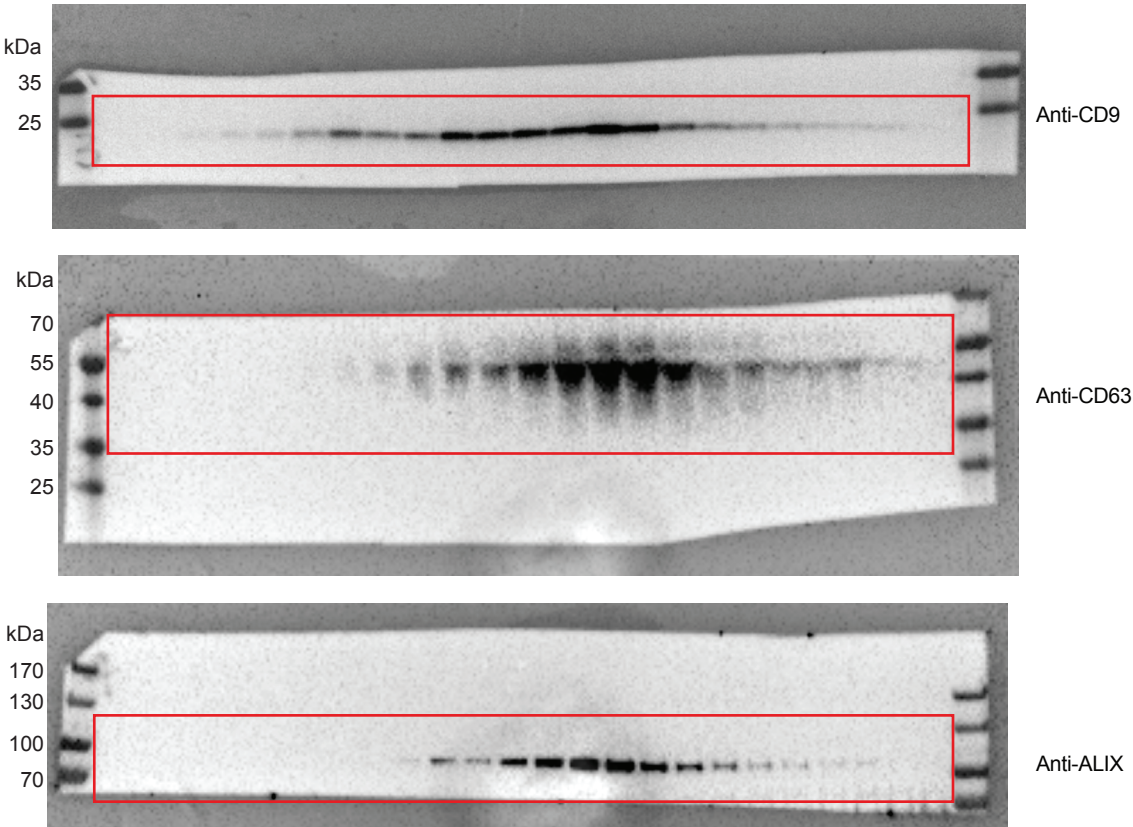


Figure 4K

uncropped blots



Lane 1: Δ YBX1, YFP-YBX1-WT,
Lane 2: Δ YBX1, YFP-YBX1-F85A.

Lane 1 and Lane 2 were used in Figure 4K (right panel).

K

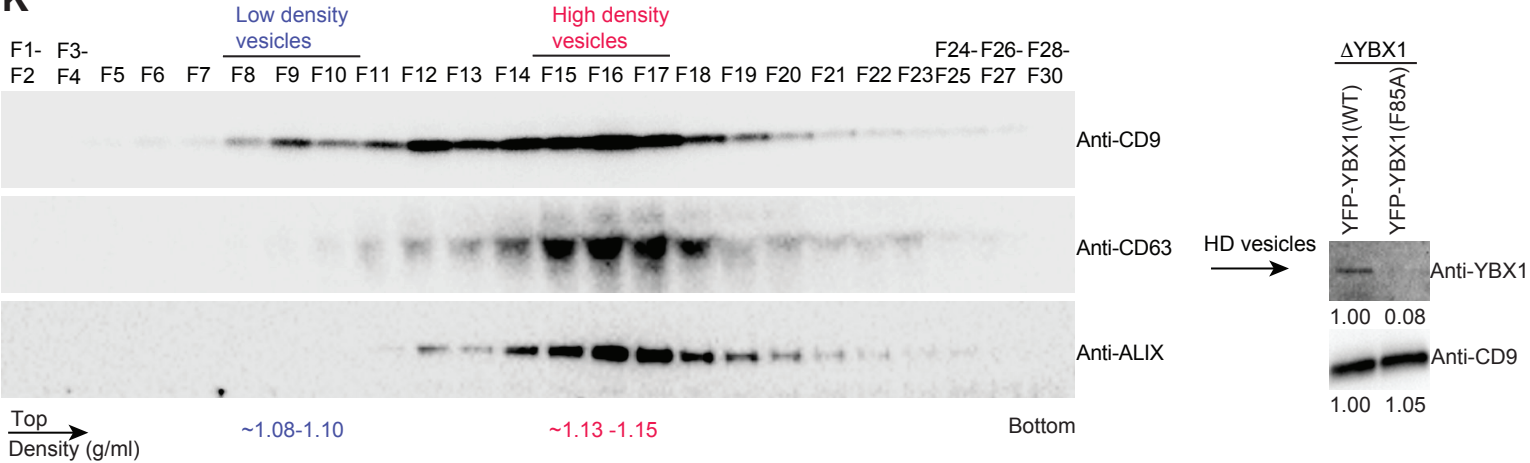


Figure 4K. Immunoblots across the iodixanol gradient for classical exosome markers CD9, CD63 and ALIX (the left panel) and YBX1 (the right panel).